



GMT MONTHLY MEMBERSHIP PROGRESS REPORT

Results as of: 3/31/2017

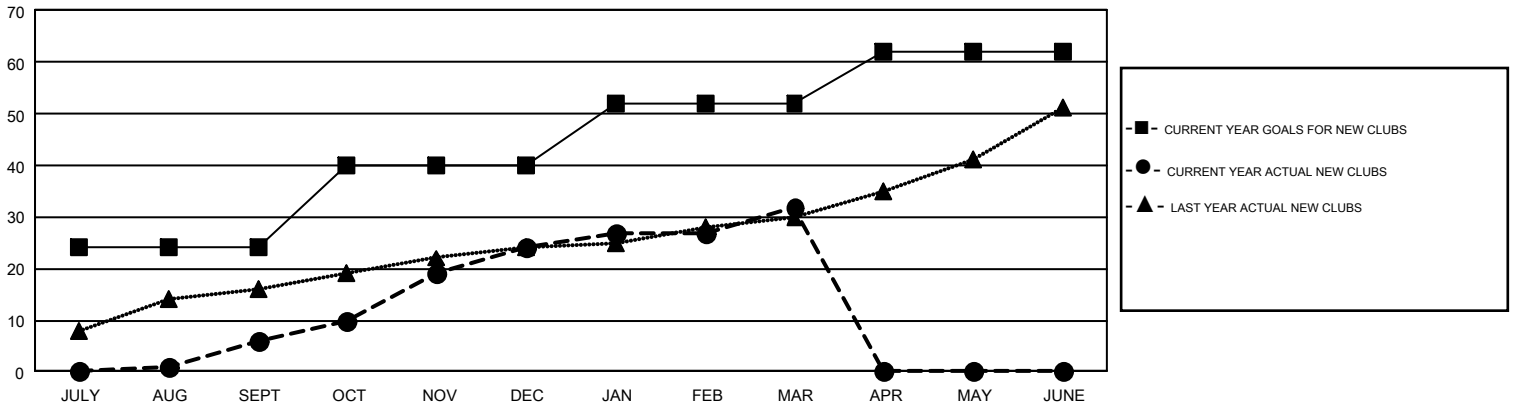
GMT Constitutional Area 6-Afr, Group F

GMT: AMARPREET SEMBI

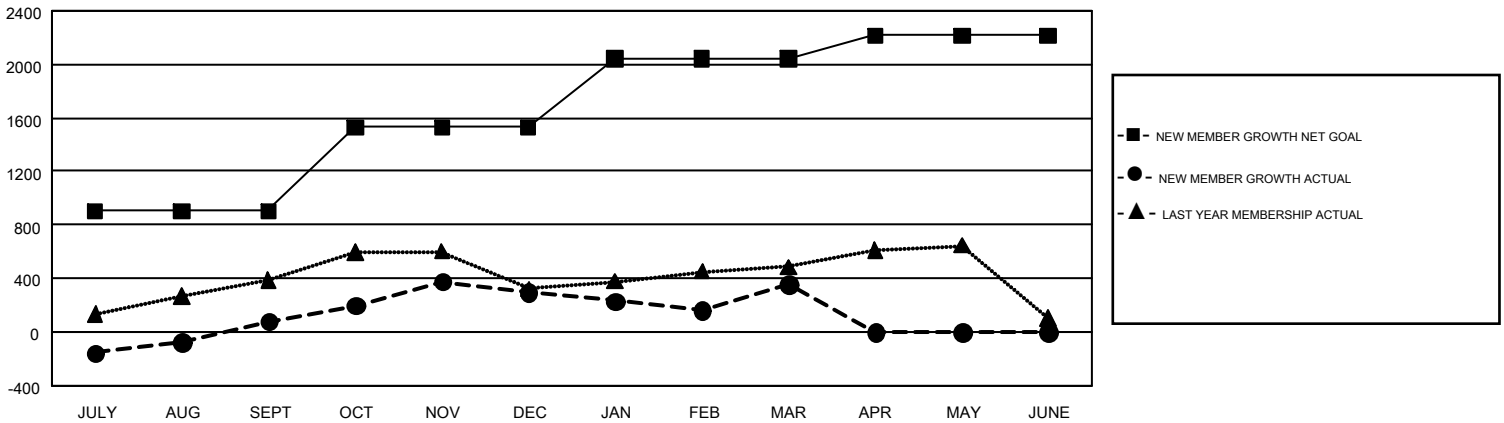
REPORT DOES NOT INCLUDE CLUBS IN UNDISTRICTED AREAS.

Clubs				Members			
RESULTS FOR 2016-2017				RESULTS FOR 2016-2017			
QUARTER	NEW CLUB GOAL	NEW CLUBS	DROPPED CLUBS	QUARTER	NEW MEMBER GROWTH NET GOAL (not reinstated or transfers)	NEW MEMBER GROWTH ACTUAL (not reinstated or transfers)	DROPPED MEMBERS ACTUAL (including transfers)
JULY/AUG/SEPT	24	6	2	JULY/AUG/SEPT	902	534	455
OCT/NOV/DEC	16	18	6	OCT/NOV/DEC	629	1,002	783
JAN/FEB/MAR	12	8	24	JAN/FEB/MAR	513	937	878
APR/MAY/JUNE	10	0	0	APR/MAY/JUNE	173	0	0

GOALS AND ACTUAL NEW CLUBS CUMULATIVE



GOALS AND ACTUAL MEMBERS CUMULATIVE



DROPPED CLUBS: 32	350 CLUBS OF 562 ADDED 1 OR MORE NEW MEMBERS	GENDER DISTRIBUTION MALE 7,803 (60.50%) FEMALE 5,095 (39.50%)
DROPPED MEMBERS DECEASED 58 CLUB CANCELLED 677 OTHER 1,380 TOTAL 2,115	CLICK HERE FOR CUMULATIVE MEMBERSHIP DATA	TOTAL FAMILY UNIT MEMBERS 1,523 FAMILY MEMBERS PAYING HALF DUES 832